

**THE RANGE**

**CASE**  
CONSTRUCTION



**PRODUCT  
& SERVICE**

[www.casece.com](http://www.casece.com)

**EXPERTS FOR THE REAL WORLD**  
**SINCE 1842**

# GLOBAL STRENGTH



1

Group

12

Brands

53

R&D Centers

63,356

Employees

6,000

Individuals dedicated  
to innovation

\$ 3.9

Million invested  
in training

5.8%

Operating margin  
industrial activities



CASE is a brand of CNH Industrial and benefits from the unique competitive advantage of being part of this major global enterprise. With a strong family of brands specializing in construction and agricultural equipment, commercial vehicles, powertrain technology, and financial services, CNH Industrial offers global scale to invest with local focus to serve.

Key Figures (31 Dec 2017)



**IVECO**

**IVECO  
ASTRA**

**IVECO  
BUS**



**MAGIRUS**

**IVECO  
DEFENCE VEHICLES**



**66**

Plants

**180**

National markets

**9,629**

Active patents  
owned

**\$ 957**

Million invested  
in R&D

**\$ 27.4**

Billion  
revenues

**\$ 9.4**

Million total  
available liquidity

# EXPERTS FOR THE REAL WORLD SINCE 1842



**1842**  
J.I. CASE company  
is founded.



**1863-65**  
Abe, the mascot of Company C of the  
First Wisconsin Regiment during the  
Civil War appears on a thresher.



**1869-70**  
CASE enters the steam  
engine business.



**1876**  
CASE builds the first self-  
propelled traction steam  
engine.



**1924**  
CASE promotes the  
role of its tractors and  
equipment in the road  
construction boom.



**1947**  
CASE creates the  
Industrial Division.



**1957**  
CASE introduces world's first  
integrated loader backhoe and  
acquires American Tractor  
Corp.



**1958**  
CASE develops the first  
4 wheel loader drive W9.



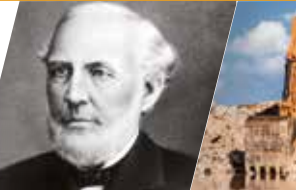
**1988**  
CASE Super K loader backhoe  
among Forbes' Top 100  
American products.



**1992**  
CASE enters excavator  
supply agreement with  
Sumitomo.



**2005**  
CASE manufactures  
the 500,000th loader  
backhoe



**2008**  
J.I. CASE inducted  
into the Association  
of Equipment  
Manufacturers (AEM)  
Hall of fame.

## OVER 170 YEARS OF INNOVATION

It all began with an inventor, Jerome Increase CASE, and the challenge of a frontier, not on a map but in the history of modernization. That was in 1842. One hundred and seventy years later CASE's DNA has remained the same: modern, innovative, human. We are the past, the present, the future. ALL TOGETHER!



**1906**  
**CASE begins building large, steam-powered road rollers.**

**1907**  
**J. I. Case goes public and begins selling stock.**

**1910**  
**CASE acquires the Pierce Motor Co. to build luxury automobiles.**

**1912**  
**CASE begins to market and manufacture road-building equipment.**



**1967**  
**CASE begins to manufacture and market articulated loaders.**

**1969**  
**CASE introduces the first-of-its-kind power-tilting dozer blade.**

**1969**  
**CASE acquires the Uni-Loader Division of Universal Industries and begins the production of skid steer loaders.**

**1977**  
**CASE acquires Poclain company.**



**2014**  
**CASE enters into a new licensing agreement with Sumitomo to manufacture excavators in its plants.**

**2016**  
**CASE announces strategic alliance with HHI for the production and development of mini-excavators.**

**2017**  
**CASE celebrates 175 years of history.**

**2018**  
**60 years of wheel loaders. G Series awarded with Good Design Award.**

# OUR VALUES



## **HERITAGE**

CASE is the expertise that comes of people living the construction business since 1842.



## **PEOPLE/PASSION**

CASE is a community of dedicated, pragmatic and determined people who take pride in their work.

Jerome Increase CASE didn't set out to build a major corporation. He was an innovator - a dreamer - driven by a strong work ethic, and he delivered timeless innovations that were the fabric of the industrial revolution. He knew that if he did right by the customer, success would follow. Today, the CASE brand family, including our dealers, still live by these values.



### **PROBLEM SOLVING**

CASE provides simple and straightforward solutions to its customers' challenges.



### **HANDS ON**

CASE is at the customer's side in the field and in their business, and actively involved in driving the industry forward.

# **CASE CUSTOMER CENTRE PARIS**



## **MORE THAN 50 MODELS OF THE CASE EQUIPMENT ARE AVAILABLE FOR YOU TO USE!**

*You can take pride in the name on your CASE machine. It represents more than a century of productivity and performance. Our rich, proud history spans more than 170 years, and we continue to make history and build our legacy around the world today. At CASE we anticipate and satisfy our customers' needs by relentlessly seeking new and innovative solutions and continuously raising the bar on performance and cost efficiency.*

*At the CASE Customer Centre Paris our customers from around the world can experience first hand the powerful performance of our full range of CASE construction equipment in real job site working conditions.*





## **CASE SERVICES**

*At the CASE Customer Centre Paris, our team of specialists will be ready to answer any queries you may have and give you all the support you may need. You will discover the CASE equipment line in a specific working environment. To make the best choice, you will be able to test drive our machines and experience their power, productivity, and comfort in real working conditions. The CASE Customer Centre Paris offers the unique opportunity to test and to find the machine that is best suited to your activity.*



### **EXAMPLE OF A VISIT**

- **Introduction to the CASE brand**
- **Presentation of the compact and heavy line**
- **Discussion around the machines**
- **Test drive**
- **Upon request, visit at the nearby master parts depot**

*The programme can be organised to fit in one day or be split into two half days with lunch included.*

**COMPACT  
LINE**

**WE'VE GOT THE**



**MINI-EXCAVATORS  
READY FOR THE CHALLENGE**



**SKID STEER LOADERS AND COMPACT  
POWER YOU CAN TRUST**

# MOVES



**TRACK LOADERS**



**BACKHOE LOADERS**  
**THE ORIGINAL, READY FOR ANYTHING**

**COMPACT  
LINE**

**WE'VE GOT THE**



**COMPACT WHEEL LOADERS  
PERFECT IN ANY MISSION**

**TELESCOPIC HANDLERS  
LIFTING POWER**

# MOVES



**MIDI CRAWLER EXCAVATORS**  
**IT'S TIME FOR MORE**

**MINI  
EXCAVATORS**



# READY FOR THE CHALLENGE



**EUROPE, AFRICA & MIDDLE EAST**

	Weight* (kg)	Engine	Power (kW / hp)	Width (mm)	Digging depth** (mm)
<b>CX17C</b>	1770	Kubota D902 - T4 Final / Stage V	12.5 / 16.8	990~1300	2200 / 2350
<b>CX18C</b>	1890	Mitsubishi L3E - T3 / Transition Stage V	12.5 / 16.8	980~1250	2250 / 2400
<b>CX26C</b>	2650	Kubota D1305 - T4 Final / Stage V	18.5 / 24.8	1500	2420 / 2645
<b>CX30C</b>	3005	Kubota D1305 - T4 Final / Stage V	18.5 / 24.8	1550	2500 / 2720
<b>CX33C</b>	3095	Yanmar 3TNV88F - T4 Final / Stage V	18.2 / 24.4	1550	3035 / 3335
<b>CX37C</b>	3760	Yanmar 3TNV88F - T4 Final / Stage V	18.2 / 24.4	1740	3135 / 3440
<b>CX57C***</b>	5580	Yanmar 4TNV98C - T4 Final / Stage V	49.9 / 66.9	1920	3820 / 4060
<b>CX60C***</b>	5980	Yanmar 4TNV98C - T4 Final / Stage V	49.3 / 64.7	1980	3570 / 3990

\* Cab version except CX17C and CX33C, which exist in Canopy version only

\*\* Short / long arm

\*\*\* Check with your CASE Dealer model availability in your country

## SKID STEER LOADERS AND COMPACT TRACK LOADERS



### EUROPE

	Rated Operating Capacity 50% (kg)	Engine	Power (kW / hp)	Weight (kg)
<b>SR130</b>	590	ISM (Nat. Asp.) - Tier 3 / Non Reg. EU	36 / 49	2300
<b>SR160</b>	725	ISM (Turbo) - Tier 4F / EU Stage IIIB	45 / 60	2505
<b>SR175</b>	790	ISM (Turbo) - Tier 4F / EU Stage IIIB	50 / 67	2842
<b>SV185</b>	840	ISM (Turbo) - Tier 4F / EU Stage IIIB	45 / 60	2980
<b>SR210</b>	905	FPT (Turbo) - Tier 4F / EU Stage IIIB	55 / 74	3160
<b>SR240</b>	1088	FPT (Turbo) - Tier 4F / EU Stage IIIB	55 / 74	3350
<b>SR270</b>	1225	FPT (Turbo) - Tier 4i / EU Stage IV	67 / 90	3681
<b>SV280</b>	1270	FPT (Turbo) - Tier 4F / EU Stage IIIB	55 / 74	3670
<b>SV340</b>	1545	FPT (Turbo) - Tier 4F / EU Stage IV	67 / 90	4136
<b>TR270</b>	1225	FPT (Turbo) - Tier 4F / EU Stage IIIB	55 / 74	3750
<b>TR310</b>	1406	FPT (Turbo) - Tier 4F / EU Stage IIIB	55 / 74	4027
<b>TR340</b>	1542	FPT (Turbo) - Tier 4F / EU Stage IV	67 / 90	4536
<b>TV380</b>	1723	FPT (Turbo) - Tier 4F / EU Stage IV	67 / 90	4785



# POWER YOU CAN TRUST



## AFRICA & MIDDLE EAST

	Rated Operating Capacity 50% (kg)	Engine	Power (kW / hp)	Weight (kg)
<b>SR130</b>	590	ISM (Nat. Asp.) - Tier 3 / EU Stage IIIA	36 / 49	2300
<b>SR150</b>	680	ISM (Turbo) - Tier 3 / EU Stage IIIA	45 / 60	2430
<b>SR175</b>	790	ISM (Turbo) - Tier 3 / EU Stage IIIA	45 / 60	2842
<b>SV185</b>	840	ISM (Turbo) - Tier 3 / EU Stage IIIA	45 / 60	2980
<b>SR200</b>	905	FPT (Turbo) - Tier 3 / EU Stage IIIA	55 / 74	3160
<b>SR220</b>	1000	FPT (Turbo) - Tier 3 / EU Stage IIIA	61 / 82	3350
<b>SR250</b>	1135	FPT (Turbo) - Tier 3 / EU Stage IIIA	67 / 90	3490
<b>SV250</b>	1135	FPT (Turbo) - Tier 3 / EU Stage IIIA	61 / 82	3630
<b>SV300</b>	1360	FPT (Turbo) - Tier 3 / EU Stage IIIA	67 / 90	3765
<b>TR270</b>	1225	FPT (Turbo) - Tier 3 / EU Stage IIIA	55 / 74	3750
<b>TR320</b>	1451	FPT (Turbo) - Tier 3 / EU Stage IIIA	67 / 90	4355
<b>TV380</b>	1723	FPT (Turbo) - Tier 3 / EU Stage IIIA	67 / 90	4625

## BACKHOE LOADERS



### EUROPE

	Backhoe type	Weight (kg)*	Engine	Power (kW / hp)	Loader bucket capacity (ltr)**	Backhoe digging depth (mm)***
580ST	14ft Case DNA	8665	FPT- Tier 4F EU Stage IV	72 / 97	1000 / 1150 / 1200	5514
	14ft In-line cylinder	8420		72 / 97	1000 / 1150 / 1200	5627
	15ft In-line cylinder	8470		72 / 97	1000 / 1150 / 1200	5881
590ST	15ft Case DNA	9400	FPT- Tier 4F EU Stage IV	82 / 110	1000 / 1150 / 1200	5965
	15ft In-line cylinder	9155		82 / 110	1000 / 1150 / 1200	5881
695ST	15ft Case DNA	9430	FPT- Tier 4F EU Stage IV	82 / 110	1150 / 1200	5965
	15ft In-line cylinder	9185		82 / 110	1150 / 1200	5881
	Loader only	9350		82 / 110	1150 / 1200	-

\* With Tool Carrier Loader arm / \*\*Standard, 4X1, 6X1 / \*\*\*Extended

# THE ORIGINAL, **READY FOR ANYTHING**



## AFRICA & MIDDLE EAST

	Backhoe type	Weight (kg)	Engine	Power (kW / hp)	Loader bucket capacity (ltr)***	Backhoe digging depth (mm)****
<b>570T</b>	14ft In-line cylinder	8110 *	FPT Tier 3	64 / 86	1000 / 1100 / 1200	5584
<b>570ST</b>	14ft In-line cylinder	8250 *	FPT Tier 3	72 / 97	1000 / 1100 / 1200	5584
	15ft In-line cylinder	8300 *	FPT Tier 3	72 / 97	1000 / 1100 / 1200	5892
<b>580T/580ST</b>	14ft Case DNA	8665 **	FPT - Tier 3	72 / 97	1000 / 1150 / 1200	5514
	14ft In-line cylinder	8420 **	FPT - Tier 3	72 / 97	1000 / 1150 / 1200	5627
<b>590ST</b>	15ft In-line cylinder	8470 **	FPT - Tier 3	72 / 97	11000 / 1150 / 1200	5881
	15ft Case DNA	9400 **	FPT - Tier 3	82 / 110	1000 / 1150 / 1200	5965
<b>695ST</b>	15ft In-line cylinder	9155 **	FPT - Tier 3	82 / 110	1000 / 1150 / 1200	5881
	15ft Case DNA	9430 **	FPT - Tier 3	82 / 110	1150 / 1200	5965
<b>695ST</b>	15ft In-line cylinder	9185 **	FPT - Tier 3	82 / 110	1150 / 1200	5881

\* With Straight Loader arm / \*\* With Tool Carrier Loader arm / \*\*\* Standard, 4X1, 6X1 / \*\*\*\* Extended

**COMPACT  
WHEEL LOADERS**



# PERFECT IN ANY MISSION



## EUROPE

	Engine	Power (kW / hp)	Buckets (m <sup>3</sup> )	Speed (km/h)	Cab height (m)	Fork Payload (80%) (t)
<b>21F</b>	FPT - Tier 4F / EU Stage IIIB	43 / 58	0.7 / 1.0	20	2.46	2.0 (XT) - 1.9 (z-Bar)
<b>121F</b>	FPT - Tier 4F / EU Stage IIIB	48 / 64	0.9 / 1.1	20	2.46	2.2 (XT) - 2.1 (z-Bar)
<b>221F</b>	FPT - Tier 4F / EU Stage IIIB	55 / 74	1.0 / 1.2	20-33 (HTS)	2.63	2.2
<b>321F</b>	FPT - Tier 4F / EU Stage IIIB	55 / 74	1.1 / 1.2	20-33 (HTS)	2.68	2.5

# TELESCOPIC HANDLERS



# LIFTING POWER



## AFRICA & MIDDLE EAST

	Engine	Power (kW/hp)	Max. lift height (m)	Max. lift capacity (kg)	Max. reach (m)
<b>TX140-45 TURBO</b>	FPT - Tier 3	88 / 118	13.55	4500	9.33
<b>TX170-45 TURBO</b>	FPT - Tier 3	88 / 118	16.60	4500	12.54

**MIDI CRAWLER  
EXCAVATORS**





# IT'S TIME FOR MORE



**EUROPE**

	Weight (Short/Long arm)* (kg)	Engine	Power (kW / hp) at 2000 min <sup>-1</sup>	Digging depth (Short/Long arm) (mm)
<b>CX85D SR</b>	7930	YANMAR (Turbo) Stage V	50.7 kW at 2000 min <sup>-1</sup>	4130 / 4630
<b>CX85D SR Offset Boom</b>	8490	YANMAR (Turbo) Stage V	50.7 kW at 2000 min <sup>-1</sup>	4240 / 4600
<b>CX90D MSR Swing Boom</b>	8630	YANMAR (Turbo) Stage V	50.7 kW at 2000 min <sup>-1</sup>	4180 / 4670

SR: Short Radius

MSR: Medium Short Radius

\* Operating weight w/ std bucket, operator, rubber tracks

**HEAVY  
LINE**

**NO TASK TOO T**



**WHEEL LOADERS  
MOVING MOUNTAINS**

**CRAWLER EXCAVATORS  
IT'S TIME FOR MORE**

# OUGH



**CRAWLER EXCAVATORS SR**  
**IT'S TIME FOR MORE**

**HEAVY  
LINE**

**NO TASK TOO T**



**SOIL COMPACTORS  
A SOLID BASE**



**WHEELED EXCAVATORS  
GET WHEELED**

# OUGH



**CRAWLER DOZERS**  
**THE ROAD TO POWER**



**GRADERS**  
**LEAD THE WAY**

## WHEEL LOADERS



### EUROPE

	Bucket payload (t)	Bucket volume (m <sup>3</sup> )	Engine	Power (kW / hp)	Max weight (t)
<b>521G</b>	3.9	2.1	FPT - Tier 4F / EU Stage IV	106 / 142	11.8
<b>621G</b>	4.7	2.3	FPT - Tier 4F / EU Stage IV	128 / 172	13.6
<b>721G</b>	5.5	2.7	FPT - Tier 4F / EU Stage IV	145 / 195	15.5
<b>821G</b>	6.4	3.6	FPT - Tier 4F / EU Stage IV	172 / 230	19.3
<b>921G</b>	7.5	4.0	FPT - Tier 4F / EU Stage IV	190 / 255	21.5
<b>1021G</b>	9.5	4.4	FPT - Tier 4F / EU Stage IV	239 / 320	27.0
<b>1121G</b>	10.2	5.0	FPT - Tier 4F / EU Stage IV	259 / 347	29.5

# MOVING MOUNTAINS



## AFRICA & MIDDLE EAST

	Bucket payload (t)	Bucket volume m <sup>3</sup>	Engine	Power (kW / hp)	Max weight (t)
<b>521F</b>	3.6	2.1	FPT - Tier 2	106 / 142	11.1
<b>621F</b>	4.3	2.4	FPT - Tier 3	128 / 172	12.9
<b>721F</b>	5.4	2.7	FPT - Tier 3	145 / 195	15.2
<b>821F</b>	6.4	3.6	FPT - Tier 3	172 / 230	18.6
<b>921F</b>	7.1	4.0	FPT - Tier 2	190 / 255	21.0
<b>1021F</b>	8.1	4.4	FPT - Tier 2	239 / 320	26.0
<b>1121F</b>	9.1	5.0	FPT - Tier 2	259 / 347	28.5

## SOIL COMPACTORS





# A SOLID **BASE**



## AFRICA & MIDDLE EAST

	Weight (kg)	Engine	Frequency (hz)	Amplitude (mm)	Rated power output (hp/rpm)
<b>1107 EX</b>	11030	FPT - Tier 3	31/34	0.8/1.8	102 / 2200
<b>1107 EX-D</b>	11080	FPT - Tier 3	31/34	0.8/1.8	102 / 2200
<b>1107 EX-PD</b>	12390	FPT - Tier 3	30/34	0.8/1.8	102 / 2200

## CRAWLER EXCAVATORS



### EUROPE

	Weight (t)	Engine	Power (kW / hp)	Max reach (m)	Dig depth (m)
<b>CX130D</b>	13.4	Isuzu - Tier 4F / EU Stage IV	78.5 / 105	8.77	6.05
<b>CX160D</b>	17.4	Isuzu - Tier 4F / EU Stage IV	86 / 115	9.38	6.49
<b>CX180D</b>	18.5	Isuzu - Tier 4F / EU Stage IV	86 / 115	9.38	6.47
<b>CX210D</b>	21.5	Isuzu - Tier 4F / EU Stage IV	124 / 166	9.90	6.65
<b>CX240D</b>	22.6	Isuzu - Tier 4F / EU Stage IV	124 / 166	9.90	6.59
<b>CX250D</b>	25.4	Isuzu - Tier 4F / EU Stage IV	140 / 188	10.80	7.42
<b>CX300D</b>	30.0	Isuzu - Tier 4F / EU Stage IV	161 / 216	11.16	7.58
<b>CX350D</b>	35.8	Isuzu - Reg. EU 2016/1628 Stage V	210 / 282	11.90	8.14
<b>CX370D</b>	38.0	Isuzu - Reg. EU 2016/1628 Stage V	210 / 282	11.17	7.34
<b>CX490D</b>	50.8	Isuzu - Reg. EU 2016/1628 Stage V	270 / 362	11.97	7.72
<b>CX750D</b>	71.6	Isuzu - Reg. EU 2016/1628 Stage V	382 / 512	12.78	7.87

# IT'S TIME FOR MORE



## AFRICA & MIDDLE EAST

	Weight (t)	Engine	Power (kW / hp)	Max reach (m)	Dig depth (m)
<b>CX130B</b>	14.3	Isuzu - Tier 3	70.9 / 96	8.77	5.54
<b>CX160B</b>	16.7	Isuzu - Tier 3	89.2 / 120	9.38	6.47
<b>CX180B</b>	17.9	Isuzu - Tier 3	89.2 / 120	9.38	6.47
<b>CX210B</b>	21.3	Isuzu - Tier 3	117 / 157	9.90	6.65
<b>CX240B</b>	24.5	Isuzu - Tier 3	132 / 177	9.90	7.42
<b>CX290B</b>	29.1	Isuzu - Tier 3	154 / 206	11.20	7.58
<b>CX350B</b>	34.2	Isuzu - Tier 3	202 / 275	11.90	8.14
<b>CX370B</b>	36.2	Isuzu - Tier 3	202 / 275	11.20	7.34
<b>CX700B</b>	68.9	Isuzu - Tier 3	345 / 463	14.60	9.85
<b>CX800B</b>	80.3	Isuzu - Tier 3	397 / 532	16.11	10.56

**CRAWLER  
EXCAVATORS SR**



# IT'S TIME FOR MORE



**EUROPE**

	<b>Weight (t)</b>	<b>Engine</b>	<b>Power (kW / hp)</b>	<b>Max reach (m)</b>	<b>Digging depth (m)</b>
<b>CX145D SR</b>	14.7	Isuzu - Tier 4 Final/ EU Stage IV	78.5 / 105	8.74	6.01
<b>CX245D SR</b>	26	Isuzu - Tier 4 Final/ EU Stage IV	124 / 166	9.85	6.65

## SPECIAL APPLICATIONS



## EUROPE

	Weight (t)	Engine	Power (kW / hp)	Max height (m)	Max reach (m)	Dig depth (m)
LONG REACH						
<b>CX130D LR</b>	15.2	Isuzu - Tier 4F / EU Stage IV	78.5 / 105	12	13	10.15
<b>CX210D LR</b>	23.6	Isuzu - Tier 4F / EU Stage IV	124 / 166	12.97	15.6	12.01
<b>CX250D LR</b>	28.1	Isuzu - Tier 4F / EU Stage IV	140 / 188	13.95	18.32	14.56
MATERIAL HANDLING / SCRAP LOADING						
<b>CX290D MH</b>	32.8	Isuzu - Tier 4F / EU Stage IV	140 / 188	12.7	11.6	3.6
<b>CX290D SL</b>	32.6	Isuzu - Tier 4F / EU Stage IV	140/188	14.4	12.9	3.9
MASS EXCAVATION						
<b>CX500D ME</b>	51	Isuzu - Tier 4F / EU Stage IV	270 / 362	10.52	10.81	6.49
<b>CX750D ME</b>	72	Isuzu - Tier 4F / EU Stage IV	382 / 521	11.06	11.7	7.18

# IT'S TIME FOR MORE



## AFRICA & MIDDLE EAST

	Weight (t)	Engine	Power (kW / hp)	Max height (m)	Max reach (m)	Dig depth (m)
LONG REACH						
<b>CX210B LR</b>	22.3	Isuzu - Tier 3	117 / 157	12.97	15.6	12.01
<b>CX240B LR</b>	28	Isuzu - Tier 3	132 / 177	13.95	18.32	14.56
MASS EXCAVATION						
<b>CX470B ME</b>	47.1	Isuzu - Tier 3	270 / 367	10.52	10.81	6.49
<b>CX700B ME</b>	69	Isuzu - Tier 3	345 / 463	10.88	11.60	7.08
<b>CX800B ME</b>	80.4	Isuzu - Tier 3	397 / 532	11.76	12.31	7.03

## **WHEELED EXCAVATORS**





# GET WHEELED



**EUROPE, AFRICA & MIDDLE EAST**

	<b>Weight (t)</b>	<b>Engine</b>	<b>Power (kW / hp)</b>	<b>Max reach (m)</b>	<b>Dig depth (m)</b>
<b>WX148</b>	16.4	FPT - Tier 3 / EU Stage IIIA	90 / 121	9.1	5.8
<b>WX168</b>	18.1	FPT - Tier 3 / EU Stage IIIA	105 / 141	9.6	5.8
<b>WX188</b>	19.8	FPT - Tier 3 / EU Stage IIIA	118 / 158	9.7	5.8
<b>WX218</b>	21.4	FPT - Tier 3 / EU Stage IIIA	129 / 173	10.0	5.8

# CRAWLER DOZERS



## EUROPE

	Power (kW / hp)	Engine	Blade capacity (m <sup>3</sup> )	Track on ground (m)	Weight (t)
<b>1150M LT</b>	103 / 138	FPT / Tier 4i EU Stage IIIB	2.88	2.6	14.12
<b>1150M WT</b>	103 / 138	FPT / Tier 4i EU Stage IIIB	3.18	2.6	14.59
<b>1150M LGP</b>	103 / 138	FPT / Tier 4i EU Stage IIIB	3.18	2.6	14.80
<b>1650M XLT</b>	122 / 164	FPT / Tier 4i EU Stage IIIB	4.84 Semi-U 3.27 Straight PAT	3.07	17.12 PAT 18.03 Semi-U
<b>1650M WT</b>	122 / 164	FPT / Tier 4i EU Stage IIIB	3.99 Straight PAT 4.04 Foldable PAT	3.07	17.53 PAT
<b>1650M LGP</b>	122 / 164	FPT / Tier 4i EU Stage IIIB	3.99 Straight PAT 4.04 Foldable PAT	3.07	17.94 PAT
<b>2050M LT</b>	173 / 232	FPT / Tier 4i EU Stage IIIB	3.22 Straight 5.57 Semi-U 4.83 Straight PAT	2.769	20.21 PAT 20.20 Straight 20.33 Semi-U
<b>2050M XLT</b>	173 / 232	FPT / Tier 4i EU Stage IIIB	3.22 Straight 5.57 Semi-U 4.83 Straight PAT	2.769	20.59 PAT 20.59 Straight 20.72 Semi-U
<b>2050M WT</b>	173 / 232	FPT / Tier 4i EU Stage IIIB	3.78 Straight 5.44 Straight PAT 5.54 Foldable PAT	3.246	21.27 PAT 21.97 PAT Foldable 21.43 Straight
<b>2050M LGP</b>	173 / 232	FPT / Tier 4i EU Stage IIIB	3.78 Straight 5.44 Straight PAT 5.54 Foldable PAT	3.246	22.11 PAT 22.79 PAT Foldable 22.13 Straight

# THE ROAD TO POWER



## AFRICA & MIDDLE EAST

	Power (kW / hp)	Engine	Blade capacity (m³)	Track on ground (m)	Weight (t)
<b>1150M LT</b>	103 / 138	FPT / Tier 2 EU Stage II	2.88	2.6	14.12
<b>1150M WT</b>	103 / 138	FPT / Tier 2 EU Stage II	3.18	2.6	14.59
<b>1150M LGP</b>	103 / 138	FPT / Tier 2 EU Stage II	3.18	2.6	14.80
<b>1650M XLT</b>	122 / 164	FPT / Tier 2 EU Stage II	4.84 Semi-U 3.27 Straight PAT	3.76	17.12 PAT 18.03 Semi-U
<b>1650M WT</b>	122 / 164	FPT / Tier 2 EU Stage II	3.99 Straight PAT 4.04 Foldable PAT	5.01	17.53 PAT
<b>1650M LGP</b>	122 / 164	FPT / Tier 2 EU Stage II	3.99 Straight PAT 4.04 Foldable PAT	5.33	17.94 PAT
<b>2050M LT</b>	173 / 232	FPT / Tier 2 EU Stage II	3.22 Straight 5.57 Semi-U 4.83 Straight PAT	2.769	20.21 PAT 20.20 Straight 20.33 Semi-U
<b>2050M XLT</b>	173 / 232	FPT / Tier 2 EU Stage II	3.22 Straight 5.57 Semi-U 4.83 Straight PAT	2.769	20.59 PAT 20.59 Straight 20.72 Semi-U
<b>2050M WT</b>	173 / 232	FPT / Tier 2 EU Stage II	3.78 Straight 5.44 Straight PAT 5.54 Foldable PAT	3.246	21.27 PAT 21.97 PAT Foldable 21.43 Straight
<b>2050M LGP</b>	173 / 232	FPT / Tier 2 EU Stage II	3.78 Straight 5.44 Straight PAT 5.54 Foldable PAT	3.246	22.11 PAT 22.79 PAT Foldable 22.13 Straight

## GRADERS



## EUROPE

	Engine	Power from 1 <sup>st</sup> to 3 <sup>rd</sup> gear (kW / hp)	Power from 4 <sup>th</sup> to 6 <sup>th</sup> gear (kW / hp)	Max operating weight (t)
<b>836C</b>	FPT - Tier 4F / EU Stage IV	102 / 138	115 / 156	12.8
<b>856C</b>	FPT - Tier 4F / EU Stage IV	129 / 173	142 / 190	16.6

# LEAD THE WAY



## AFRICA & MIDDLE EAST

	Engine	Power from 1 <sup>st</sup> to 2 <sup>nd</sup> gear (kW / hp)	Power from 3 <sup>rd</sup> to 4 <sup>th</sup> gear (kW / hp)	Power from 3 <sup>rd</sup> to 6 <sup>th</sup> gear (kW / hp)	Power from 5 <sup>th</sup> to 6 <sup>th</sup> gear (kW / hp)	Max operating weight (t)
<b>845B</b>	FPT - Tier 3	112 / 150	-	129 / 173	-	15.0
<b>865B</b>	FPT - Tier 3	144 / 193	153 / 205	-	164 / 220	15.9
<b>885B</b>	FPT - Tier 3	164 / 220	-	175 / 234	-	18.0

# CNH INDUSTRIAL CAPITAL FINANCIAL SOLUTIONS



*A complete range of financial and insurance services customised to your needs: Financing, Leasing, Mechanical breakdown insurance, Repair cost insurance, Full Service.*

## **THE IDEAL FINANCIAL SOLUTION FOR EVERY CASE CUSTOMER**

*CNH Industrial Capital is the financing company for CASE Construction Equipment. Our staff of specialist financial services experts has many years of experience in the construction sector. We know the CASE products and markets very well. Most importantly, we have an in-depth understanding of the individual requirements of your business. For this reason, we are always able to offer the best financing solutions for your investment, that are a perfect fit for your operational and business requirements, and for the intended use of your new equipment. Depending on your needs, the solution may be a loan, a rental or a leasing agreement. Our top priority is to ensure you get the most out of your investment! And you can combine every CNH Industrial Capital financing package with CNH Industrial Capital insurance cover against mechanical breakdown or repair costs, so that you can eliminate risk from your investment and plan effectively.*

# PARTS & SERVICE GENUINE SUPPORT



**Genuine Parts**  
HIGH PERFORMANCE

**CASE**  
CONSTRUCTION

## PARTS & SERVICE

CNH Industrial Parts & Service has one overriding objective: maximize your equipment's productive time and performance by providing fast and efficient support. To do this, it operates a global network of 57 parts depots that manages 5 million parts and ships over 36 million order lines every year. We deliver 24/7, covering a machine population of 3.5 million through partnerships with suppliers that meet the most stringent quality standards in terms of raw materials and production processes; strict compliance testing to ensure product reliability, durability and safety, guaranteeing the machine's long term value and performance; and distribution and availability of spare parts and accessories for the entire life cycle of the machine. Our Original Parts guarantee the maximum reliability and performance over time. We also offer a wide range of customised Accessories to optimise the efficiency, comfort and safety of our machines. Our Remanufactured Parts (Reman) give new life to products, benefiting our customers and the environment. Finally, our Special Lines meet the demand of spare parts for older machines and other manufacturers' models.

# THE PROTECTION PLAN

## POWERTRAIN, POWERTRAIN PLUS HYDRAULIC, PREMIER

The plan is available to all customers of our franchised dealers and can be provided at point of sale, or within the base warranty period. By choosing to take out a CASE Protection Plan you are not only protecting your machine, but also your investment. Throughout our extensive dealer network, CASE Construction will provide you with the backup and support that you need in today's busy environment, and the CASE Protection Plan gives you further confidence that we are there for you as your partner.

- Protection Plans available on the full range of CASE machinery
- Protection available for up to five years/8000 hours
- Three coverage options: Powertrain, Powertrain plus Hydraulics and Premier
- 10% DISCOUNT with MAINTENANCE CONTRACTS
- Transferable for FREE

## NEW PROGRAMMED MAINTENANCE PLANS = TOTAL CONTROL OF YOUR COSTS + TOP PERFORMANCE FROM YOUR FLEET

Boost your business by taking full control of your operating costs and enjoying the benefits of a healthy fleet with CASE's new programmed maintenance plans, available on all CASE equipment.

**Save money on parts:** the prices of parts are frozen for the duration of the programmed maintenance plans, so you don't have to worry about prices going up.

**Control operating costs:** you know exactly how much you will spend on maintaining your equipment for the duration of the programmed maintenance plan, so you can make the best decisions for your business.

**Get more performance from your fleet:** you enjoy the benefits of a healthy fleet always in peak form by relying on CASE's professional service teams to carry out the best maintenance plan for every CASE machine in your fleet.



**ACT NOW  
TO BOOST  
YOUR  
BUSINESS**

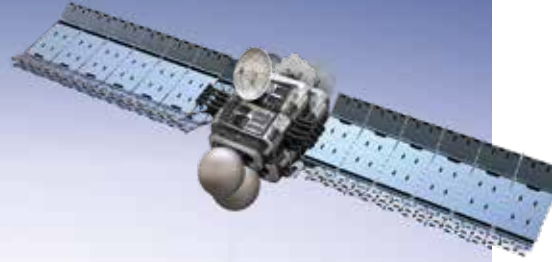
Contact your CASE dealer to discuss tailored Programmed Maintenance plans for all your CASE machines.





**CASE**





## **THE SCIENCE BIT**

*The CASE SiteWatch telematics system uses a high-tech control unit mounted on each machine to collate information from that machine and from GPS satellites. This data is then sent wirelessly through the mobile communication networks to the CASE Telematics Web Portal.*

### **SiteWatch: centralised fleet control benefits at your fingertips**

- 📶 **Measure your true asset availability and optimise it**
- 📶 **Challenge your Total Cost of Ownership!**
- 📶 **More Safety, Lower Insurance Premium**



## **MACHINE CONTROL SOLUTIONS**

*The Leica iCONstruct portfolio offers you a straightforward solution that you can customize to match the specific requirements of your road and building construction business.*



### **iCONtrol PowerSnap**

*Wireless cradle - all set in one snap!*

### **PowerSnap concept**

*Unique patented Snap-on & Snap-off capability.  
Contact free.*

*Easy upgrade 2D -> 3D. Intelligent storage of machine data.*

**CASE CONSTRUCTION EQUIPMENT**  
**CONTACT INFORMATION**

**CNH Industrial Deutschland GmbH**  
Case Baumaschinen  
Benzstr. 1-3 - D-74076  
Heilbronn  
DEUTSCHLAND

**CNH Industrial Maquinaria Spain, S.A.**  
Avenida Aragón 402  
28022  
Madrid  
ESPAÑA

**CNH Industrial France, S.A.**  
16-18 Rue des Rochettes  
91150  
Morigny-Champigny  
FRANCE

**CNH Industrial Italia Spa**  
Strada di Settimo, 323  
10099  
San Mauro Torinese (TO)  
ITALIA

**CNH Industrial - UK**  
First Floor, Barclay Court 2,  
Heavens Walk,  
Doncaster - DN4 5HZ  
UNITED KINGDOM

**CNH Industrial - South Africa**  
N1 Business Park  
Slate Avenue  
Cosmosdal  
SOUTH AFRICA

**CNH Industrial - Middle East**  
Dubai Regional Representative Office  
Dubai Airport Free Zone, Building 2W  
Office 201 - PO Box 54588  
UNITED ARAB EMIRATES

**CASE Customer Centre Paris**  
RN 330 - Penchard  
77122 - Monthyon  
FRANCE

**NOTE:** Standard and optional fittings can vary according to the demands and specific regulations of each country. The illustrations may include optional rather than standard fittings - consult your Case dealer. Furthermore, CNH Industrial reserves the right to modify machine specifications without incurring any obligation relating to such changes.

Conforms to directive 2006/42/EC

**CASE**  
00800-2273-7373

The call is free from a land line.  
Check in advance with your Mobile  
Operator if you will be charged.  
Toll free number not available from  
all calling areas.