

RELIABLE

EASY TO USE

TRUCK-MOUNTED CONCRETE BOOM PUMP

Placing boom

K49C

Pumping unit

PU1808

Version

4.0

Driven by

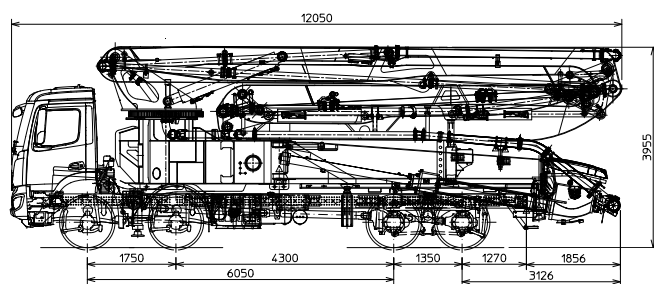
Truck PTO or Gear box

Chassis

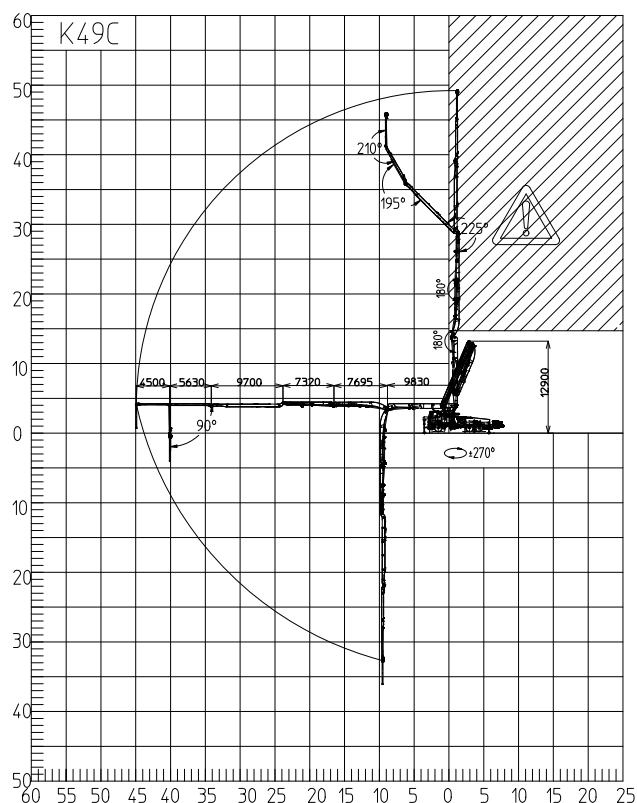
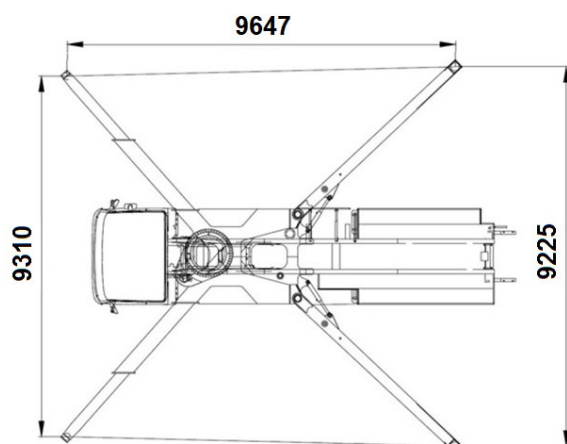
4 - 5 axles



Dimensions



Dimensions varying according to truck assembly



Standard equipment

- Advantageous assembling on 4 axles chassis
- Self-supporting frame, torsion free, FEM designed and fatigue tested at the test bench TEC CIFA
- Placing boom 6RZ 49/44 with 6 sections, "RZ" folding system
- 2 Proportional radio controls with two speeds boom movement, automatic frequency scanner
- 20 m emergency cable to connect radio controls.
- Centralized lubrication system for pumping unit
- Hard carbide wear plate and cutting ring for PU pumping units
- Fiberglass hopper covering
- Low pressure water pump (20 Bar / 75 l/min)
- One colour painting white RAL 9010
- 2 Use & Maintenance manuals
- Spare parts and service manual

Control system with truck PTO

- Easytronic Gold:
 - LSC (Light Stability Control)
 - Integrated color LCD
 - Counters
 - Pumping unit management
 - Diagnostic

Control system with gear box

- Easytronic Silver:
 - Integrated color LCD
 - Counters
 - Pumping unit management
 - Diagnostic

Main options

- 2 Proportional radio controls HBC (in replacement of the standard)
- High pressure water pump 120 bar / 28 l/min - 40 kg
- Concrete shut off on endhose - 2 kg (includes air pipeline on placing boom)
- First aid kit for pumping unit
- Emergency button panel for PU pumping unit
- Additional endhose double stapling

MANUFACTURING	CIFA HUNAN
TRUCK ASSEMBLY	CIFA ITALY
TESTING	CIFA ITALY
CE CERTIFICATION	CIFA ITALY
WARRANTY	CIFA ITALY

TRUCK-MOUNTED CONCRETE BOOM PUMP

Placing boom	K49C
Pumping unit	PU1808
Version	4.0
Driven by	Truck PTO or Gear box
Chassis	4 - 5 axles

Pumping unit technical data

Model		PU1808
Maximum theoretical output	m ³ /h	180
Maximum pressure on concrete	bar	83
Conc. cylinders (diam. x stroke)	mm	260x2100
Concrete hopper capacity	l	600
Hydraulic circuit		Close

Placing boom technical data

Model		6RZ 49/44
Pipeline diameter	mm	125
Maximum vertical reach	m	48,6
Maximum horizontal distance (from center of slewing axis)	m	43.6
Minimum unfolding height	m	12.9
Section numbers		6
1st section opening angle		90
2nd section opening angle		180°
3rd section opening angle		180°
4th section opening angle		225°
5th section opening angle		195°
6th section opening angle		210°
Rotating angle		+/-270
End hose lenght	m	3

Technical data and characteristics subject to modifications without notice