

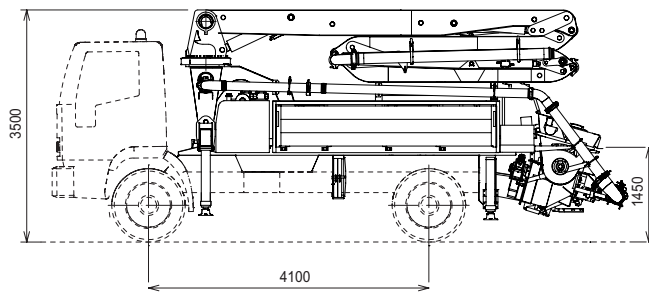
K20L

TRUCK-MOUNTED CONCRETE BOOM PUMP

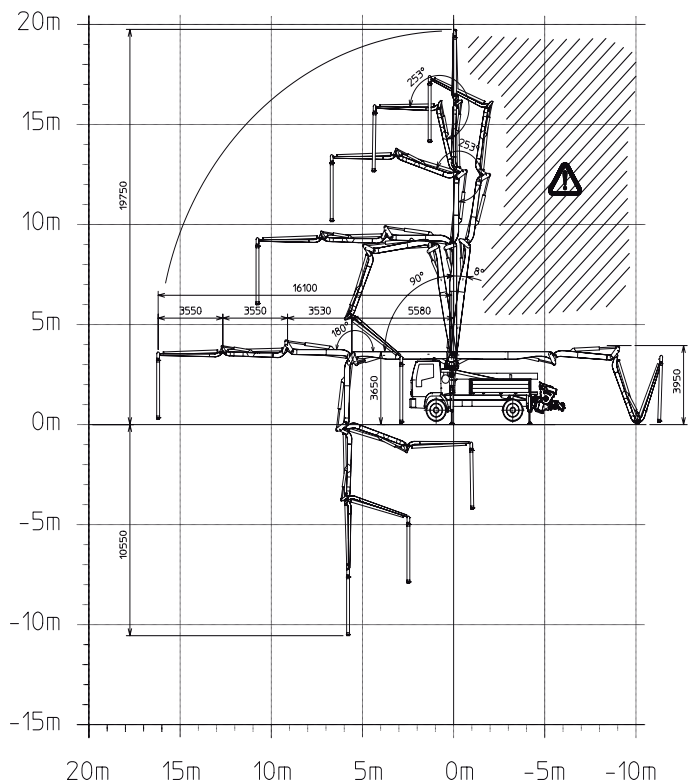
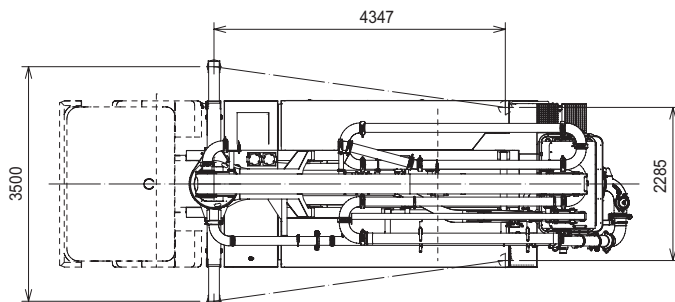
Placing boom	B4ZR 20/16
Pumping unit	PA 709 F8
Driven by	PTO or gearbox
Chassis	2 axles



Dimensions



Dimensions varying according to truck assembly



K20L

Standard equipment

- Assembling on standard 2 axles chassis
- Self-supporting frame, torsion free, FEM designed
- Placing boom B4ZR 20/16, 4 sections, pipeline diameter 125 mm, "Zed-R" mixed folding system
- Fully hydraulic outrigger controls on both sides of the truck
- Front extensible and rear fixed outriggers for a quick set-up and an easy placement in narrow areas
- Proportional boom control allowing the operator to control more placing boom sections simultaneously
- The "BFC" Best-Flex Cifa supporting system allowing just one man to change delivery pipeline easily, quickly and safely
- Concrete flow rate regulator
- Quiet pumping with high performances: smooth, continuous and easy movements
- Safety device on opening inspection hatch
- 2 Proportional radio control with two boom movement speed, synthesiser for automatic frequency search, 8 position joystick and concrete flow rate regulator. 20 mt cable
- Remote controlled vibrator on the concrete hopper grid
- Centralized lubrication system for pumping unit
- Automatic oil lubrication system for pumping pistons
- Additional manual lubrication system for pumping pistons
- Hard plastic outrigger support plates with relative housing
- Rear light on hopper
- Level readers for stabilization control
- Accessories for cleaning and pipes washing
- Hose carrier for 12 hoses - 3m length and collar
- Air compressor for pipeline cleaning
- Double thickness concrete pipes, in high resistant steel - CIFA Long Life Pipes
- Fiberglass hopper cover

Main optionals

- LSC - Light Stability Control
- High pressure water pump (28l/120bar)
- Centralized lubrication system for placing boom
- Air pipeline for placing boom
- Separated emergency engine kit for independent control of the concrete pumping unit, boom and water pump
- Concrete shut-off valve
- Rear camera for easy manoeuvring
- Additional hose carrier for 18 DN65 hoses - 4,5m length

TRUCK-MOUNTED CONCRETE BOOM PUMP

Placing boom	B4ZR 20/16
Pumping unit	PA 709 F8
Driven by	PTO or gearbox
Chassis	2 axles

Pumping unit technical data

Model		PA 709 F8
Max. theoretical output	<i>m³/h</i>	70
Max. pressure on concrete	<i>bar</i>	85
Conc. cylinders (diam. x stroke)	<i>mm</i>	200x1500
Concrete hopper capacity	<i>l</i>	550

Placing boom technical data

Model		B4ZR 20/16
Pipeline diameter	<i>mm</i>	125
Max. vertical reach	<i>m</i>	19,75
Max. horizontal distance	<i>m</i>	16,1
Min. unfolding height	<i>m</i>	3,95
Section numbers	<i>n°</i>	4
1st section opening angle		90°/+8°
2nd section opening angle		180°
3rd section opening angle		253°
4th section opening angle		253°
Rotating angle		+/-270°
End hose length	<i>m</i>	3

Technical data and characteristics subject to modifications without notice