

WHY  
CIFA



## Truck Pumps & Placing Booms CLASSIC Series

# WHY CIFA



# USER FRIENDLY PUMPS AND BOOMS

With the Classic line CIFA aims to deliver essential and easy to use truck mounted pumps available in stock. The Classic line allows to access the best purchasing conditions thanks to basic choices of options and configuration, nevertheless maintaining the typical technological elements of our pumps.



TESTING



TEC TESTING CENTER



READY FOR DELIVERY

## LEASING



Available in Italy, Russia, China, South Africa, Australia, USA and Germany

MANUFACTURING

CIFA HUNAN (CN)

## MOUNTED ON ALL TRUCK BRANDS



CIFA truck pumps can be mounted on all truck brands. According to CIFA truck specifications documentation

## TRAINING FOR OPERATORS





**PLACING BOOMS**  
Available lengths to reach all distances.



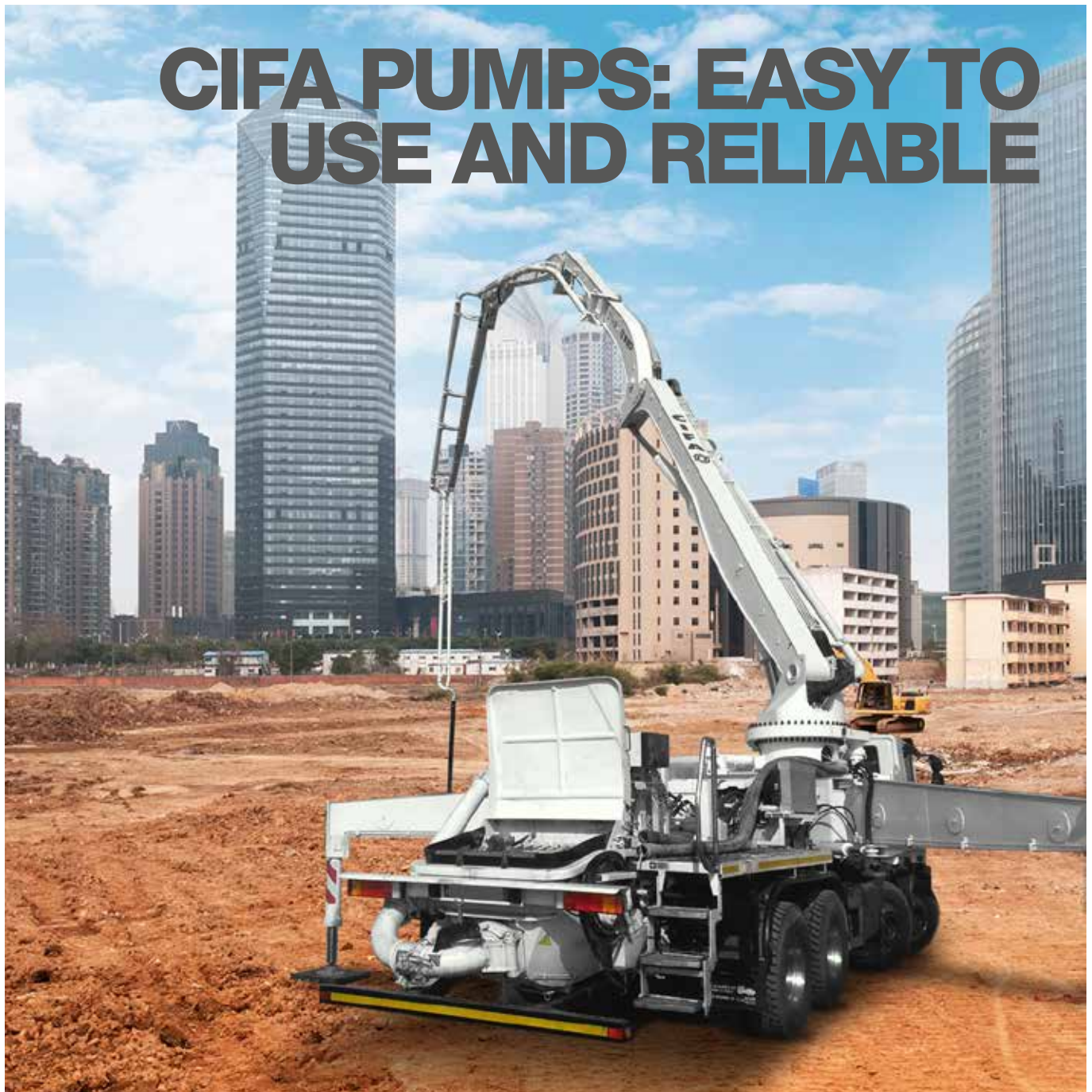
**STABILIZATIONS**  
Different types of stabilization in order to guarantee a safe work in a small area.



**PUMPING UNITS**  
An open-loop pumping unit to guarantee maximum reliability and lowest maintenance.



**FINISHING**  
White colour as standard painting.



# CIFA PUMPS: EASY TO USE AND RELIABLE



# PLACING BOOM



## STRENGTH AND RELIABILITY:

The booms mounted on CIFA truck pumps combine both strength and reliability. Each section of the boom has been designed for maximum structural resistance and fatigue strength. These advanced booms reduce to a minimum the areas subjected to stress intensification when in operation.

## VERSATILITY AND FLEXIBILITY:

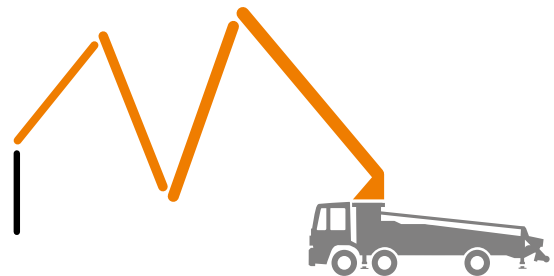
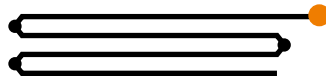
The different configurations of the booms on CIFA truck pumps ensure the greatest operative versatility and enable to reach almost any part of the construction yard, even those accessible with the most difficulty. Complete working flexibility together with great working speed, allows the complete extension of the boom and its perfect positioning in few minutes.

## Z Type

Quick opening operations for concrete pouring near and far from the truck pump.

Available for:

**K36C - K38C**

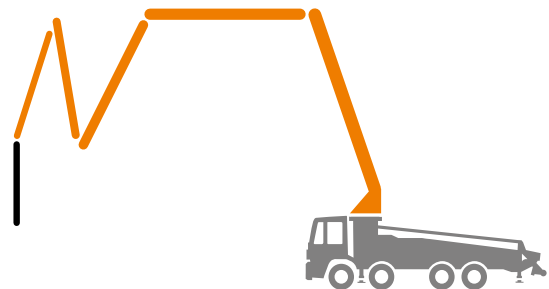
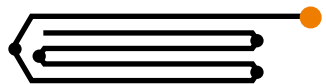


## RZ Type

Ideal for 5 and 6 sections boom. It provides maximum flexibility by combining R+Z solutions.

Available for:

**K40C - K41C - K49C - K56C**



The structural strength and stiffness of the sections ensure limited oscillations even on longer booms.

The working speed, guarantees the complete extension of the boom and its perfect positioning within few minutes.

# FOLDING SYSTEMS



### LSC LIGHT STABILITY CONTROL



The system, available on demand, allows the complete movement of the boom when the outriggers are 100% opened.

All outriggers are designed to stabilize the machine in the right way in extraordinary tight spaces.

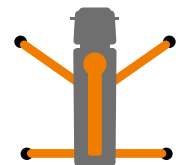
The sequences of the extension phase are quick in order to accelerate the stabilization.

Every Swing-out can be used as tank; the capacity goes from 400 to 700 litres per each swing-out.

# STABILIZATION

Front: **Single telescopic X style**  
Rear: **Single horizontal**

Available for:  
**K36C**



Front: **Single telescopic X style**  
Rear: **Swing-out**

Available for:  
**K38C - K40C**



Front: **Double telescopic X style**  
Rear: **Swing-out**

Available for:  
**K41C - K49C - K56C**





# PUMPING UNIT

Completely removable, the pumping unit ensures gentle, continuous and regular flow. This technology guarantees an extremely efficient system for pumping different types of concrete, with aggregates of all sizes, reducing the number of cycles per minute while maintaining the same flow rate, thus ensuring less wear and longer life.

## PU1207 Open Loop



Available for:  
**K36C**

## PU1506 Open Loop



Available for:  
**K38C - K41C**

## PU1607 Open Loop

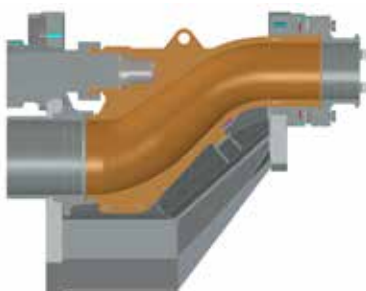


Available for:  
**K40C - K56C**

## PU1708 Open Loop



Available for:  
**K49C**



### **"S" VALVE:**

The structure is made with varying thickness to achieve maximum resistance to wear even when using difficult types of concrete.



### **WEAR RING AND WEAR PLATE:**

The ring and the plate are made of special anti wear material against abrasion and stress due to the concrete flow.

# CONTROL SYSTEM



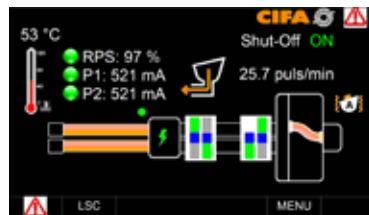
EASYTRONIC is the user-friendly control system made by CIFA to easy manage the truck pucker during the operation at the job site. Furthermore, thanks to EASYTRONIC, the operator receives the most important data from the machine, such as: Working areas, cubic meters pumped, number of cycles, RPS setting, Cycles in pumping or suctioning, shut-off activated.

## Easytronic



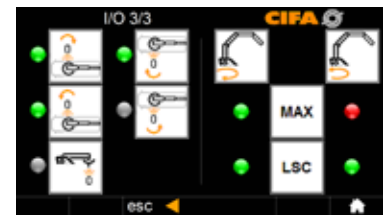
### COUNTERS

The system collects and Shows main data.



### PUMPING UNIT MANAGEMENT

The system manage the pumping unit optimizing the \performance.



### DIAGNOSTICS

The system provides a detailed analysis of the working phase.



# DATA SHEET

## CLASSIC



### K36C

PLACING BOOM	5Z 36/32
PUMPING UNIT	PU1207
DRIVEN BY	GEAR BOX



### K38C

PLACING BOOM	4Z 38/32
PUMPING UNIT	PU1506
DRIVEN BY	GEAR BOX



### K40C

PLACING BOOM	5RZ 40/36
PUMPING UNIT	PU1607
DRIVEN BY	GEAR BOX



### K41C

PLACING BOOM	5RZ 41/37
PUMPING UNIT	PU1506
DRIVEN BY	GEAR BOX PTO



### K49C

PLACING BOOM	6RZ 49/45
PUMPING UNIT	PU1708
DRIVEN BY	GEAR BOX PTO



### K56C

PLACING BOOM	6RZ 56/52
PUMPING UNIT	PU1708
DRIVEN BY	GEAR BOX PTO





# JOB SITES



# PLACING BOOMS

CIFA Classic concrete placing boom provides professional solutions for high buildings and large-scale constructions.

# DATA SHEET

## CLASSIC



### PB29A-3RC

Vertical reach	29 m
Horizontal reach	29 m
Depth of reach	22.2 m
Free standing height	24 m
Arms	3
Folding system	R
Arms angle	90°-180°-180°
Rotation range	365°



### PB29D-3RC

Vertical reach	29 m
Horizontal reach	29 m
Depth of reach	22.2 m
Free standing height	24 m
Arms	3
Folding system	R
Arms angle	90°-180°-180°
Rotation range	365°



### PB33A-4ZC

Vertical reach	33 m
Horizontal reach	33 m
Depth of reach	26.9 m
Free standing height	24 m
Arms	4
Folding system	Z
Arms angle	180°-180°-180°
Rotation range	365°



### PB33D-3RC

Vertical reach	33 m
Horizontal reach	33 m
Depth of reach	26.9 m
Free standing height	24 m
Arms	4
Folding system	R
Arms angle	180°-180°-180°
Rotation range	365°



Discover more at [www.cifa.com](http://www.cifa.com)

### Distributor



#### **CIFA S.p.A.**

Via Stati Uniti d'America, 26  
20030 Senago (Milano) - Italy

tel. +39.02.990131

fax. +39.02.9981157

**[sales@cifa.com](mailto:sales@cifa.com)**

**[www.cifa.com](http://www.cifa.com)**

