

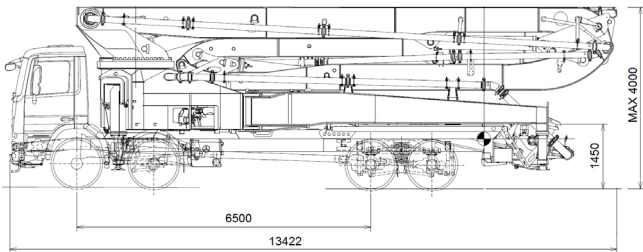
## K55L

### TRUCK-MOUNTED CONCRETE BOOM PUMP

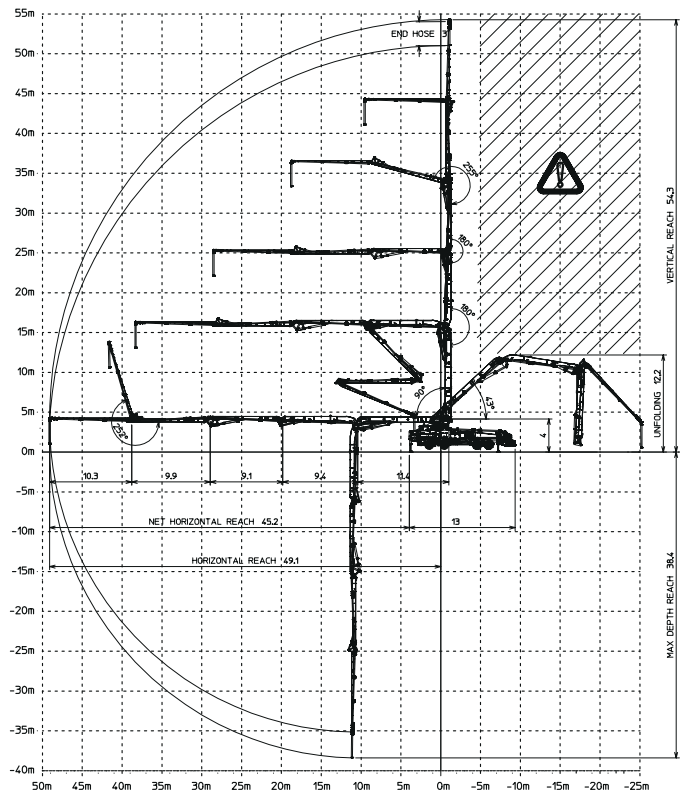
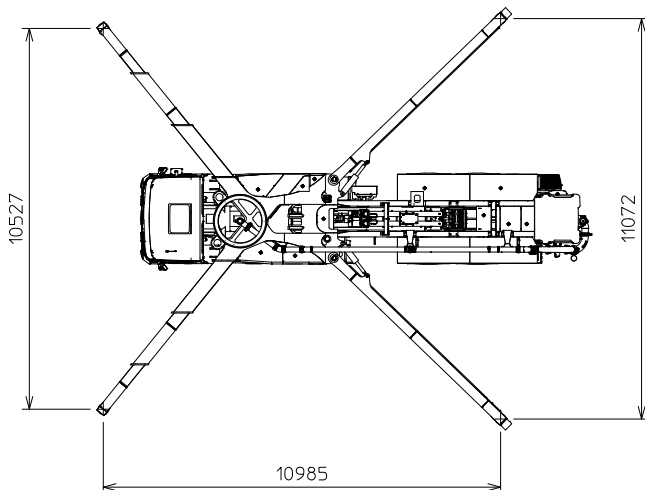
Placing boom	B5RZ 55/50
Pumping unit	HP1808ECX
Driven by	HP1606H
Chassis	PTO 4(EXTRA CE)-5 axles



### Dimensions



Dimensions varying according to truck assembly



## K55L

### Standard equipment

- Assembly on standard 4 (EXTRA CE) or 5 axles
- Self-supporting frame, torsion free, FEM designed
- Placing boom B5RZ 55/50, 5 sections, "RZ" folding system
- Fully hydraulic outrigger controls on both sides of the truck
- Front "X style" diagonal outriggers with sequence controlled triple patented telescopic opening and swing-out rear outriggers for a quick and easy set-up
- "Load Sensing" proportional boom control for pumping unit HP-C
- "BFC" Best-Flex Cifa supporting system allowing just one man to change delivery pipeline easily, quickly and safe
- Concrete flow rate regulator
- Safety device on opening inspection hatch
- Pumping unit with closed loop (HP1808ECX) or with open loop (HP1606H)
- Project conforms to Directive Machinery 2006/42/CE
- 2 Proportional radio control Hetronic 3 joystick. 20 mt cable
- Double thickness concrete pipes, in high resistant steel and insert carbide chrome - CIFA Long Life Pipes
- Emergency control pad for pumping unit HP-C
- Remote controlled electric vibrator placed on the concrete hopper grid
- Centralized lubrication system for pumping unit
- Automatic oil lubrication system for pumping pistons
- Additional manual lubrication system for pumping pistons
- Hard plastic outrigger support plates with relative housing
- Rear light on hopper
- Level readers for stabilization control
- Accessories for cleaning and pipes washing
- Fiber glass hopper covering

### Control System with pumping unit HP1808ECX

- Smartronic Silver:
  - intergrated color LCD
  - counters
  - pumping unit management
  - diagnostic
  - capsense rear panel

### Control System with pumping unit HP1606H

- Easytronic Silver:
  - intergrated LCD
  - counters
  - pumping unit management
  - diagnostic

### Main options

- Smartronic Gold (Smartronic Silver + ASC Advanced Stability Control)  
*(Available only with closed loop)*
- Easytronic Gold (Easytronic Silver + LSC Light Stability Control)  
*(Available only with open loop)*
- Pompa acqua ad alta pressione (28l/120 bar)
- High pressure water pump 28l / 120 bar
- Centralized lubrication system for placing boom
- Separated emergency engine kit for independent control of the concrete pumping unit, boom and water pump
- Double thickness boom straight pipes, in high resistant steel and insert carbide chrome - CIFA LLT Long Life Top
- Proportional radio control with display

### TRUCK-MOUNTED CONCRETE BOOM PUMP

<b>Placing boom</b>	B5RZ 55/50
<b>Pumping unit</b>	HP1808ECX
<b>Driven by</b>	HP1606H
<b>Chassis</b>	PTO 4(EXTRA CE)-5 axles

### Pumping unit technical data

Model		HP1606H	HP1808ECX
Max theoretical output	<i>m<sup>3</sup>/h</i>	160	180
Max. pressure on concrete	<i>bar</i>	53	83
Concrete cylinders (diam. x stroke)	<i>mm</i>	230x2100	260x2100
Concrete hopper capacity	<i>l</i>	550	600
Hydraulic circuit		open	closed

### Placing boom technical data

Model		B5RZ 55/50
Pipeline diameter	<i>mm</i>	125
Max. vertical reach	<i>m</i>	54,3
Max. horizontal distance (from center of slewing axis)	<i>m</i>	49,1
Min. unfolding height	<i>m</i>	12,2
Section number		5
1st section opening angle		90°
2nd section opening angle		180°
3rd section opening angle		180°
4th section opening angle		255°
5th section opening angle		252°
Rotating angle		+/-270°
End hose length	<i>m</i>	3

Technical data and characteristics subject to modifications without notice

